

MD012012

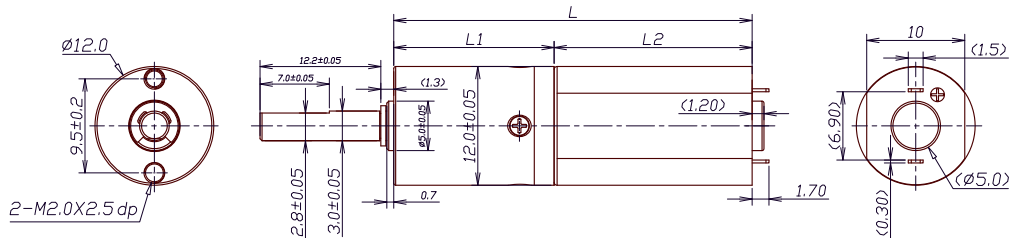
Gearbox Specifications

Outer diameter	12mm	Bearing	Porous bearing
Material	Metal	Axial misaply	0.3mm
Direction of rotation	cw & ccw	Radial loading on output shaft	10N
Gear backlash	3'	Operating temperature range	-20 ~ +85

Gearbox Stages

	1	2	3	4
Reduction ratio	4/6	18/24/36	64/96/144/216	256/384/576/864/1296
gf.cm Max rated torque of gearbox (gf.cm)	300	1000	1500	2000
gf.cm Instant torque of gearbox (gf.cm)	1000	3000	4500	5000
% Gearbox efficiency %	87	74	63	56
mm Gearbox length L1 (mm)	12.4	16.2	20	23.8

技术插图 | Technical Drawing



Motor Specifications

() Motor type (optional)	Brushed DC motor Brushless DC motor Coreless motor Stepper motor	Input speed	30000rpm
() Voltage (optional)	3-24V	Current	250mA max

Model	Rated Speed 额定转速	Max Speed 最高转速	Max Rated Torque 额定输出力矩	Max Instant Torque 峰值输出力矩	Reduction Ratio 减速比	Gearbox Length 箱体长度 L1	Gearbox Length 总长 L
	rpm	rpm	gf.cm	gf.cm		mm	mm
MD012012-4	1875	7500	300	1000	4	12.4	32.4
MD012012-6	1250	5000	300	1000	6		
MD012012-18	489	1875	1000	3000	18	16.2	36.2
MD012012-24	313	1250	1000	3000	24		
MD012012-36	208	833	1500	3000	36		
MD012012-64	117	469	1500	4500	64	20	40
MD012012-96	78	313	1500	4500	96		
MD012012-144	52	208	1500	4500	144		
MD012012-216	35	139	1500	4500	216		
MD012012-256	29	117	2000	5000	256	23.8	43.8
MD012012-384	20	78	2000	5000	384		
MD012012-576	13	52	2000	5000	576		
MD012012-864	9	35	2000	5000	864		
MD012012-1296	6	23	2000	5000	1296		

Please contact us for customized products